

turnwood ^{tw}
your bedroom. your style. your choice.



inspiration to create your bedroom

we are passionate about giving our customers all the choice they need when investing in quality furniture for the bedroom.

the detail and craftsmanship that goes into creating every piece of turnwood furniture is as unique as the tree it comes from.

turnwood key:

Below are the timbers available throughout this brochure.

american white oak

Straight grained timber. Choose from our range of colours on page 40.



beech

Made from southland maple beech. Choose from our range of colours on page 40.



pine

A solid wood that you can colour. Choose from our range of colours on page 40.



rimu

A rich grained timber that is enhanced with the turnwood finish.



mdf

Medium density fibreboard. Quality New Zealand mdf that is painted to our standard paint colours or in any resene or dulux colour.



contents

bedroom suites & furniture

- 4 features & benefits**
 - flexi slat & solid slat
- 5 slat options**
- 6 contemporary range**
 - clifden
 - dakota
 - saffron
 - saffron in pine
- 14 classic range**
 - alexandra
 - magnolia
 - savanah
 - thornbury
 - celine

headboards & beds

- 25 contemporary range**
 - canterbury
 - clifden
 - dakota
 - tasman
 - zen
- 27 classic range**
 - aberdeen
 - avon
 - christina
 - devon/magnolia
 - kensington
 - jaime
 - london/alexandra
 - mckenzie base
 - milton
 - salisbury
 - savanah
 - thornbury
- 31 curved range**
 - celine
 - chateau
 - saffron base
 - saffron

kids range

- 33 suites**
 - sienna
 - jayden
- 35 headboards & beds**
 - aberdeen
 - avon
 - jaime
 - jayden
 - sienna
 - taylor
 - stratford bunk
 - trundler

finishing touches

- 39 handle options**
 - colours & finishes
 - leg detail

measurements

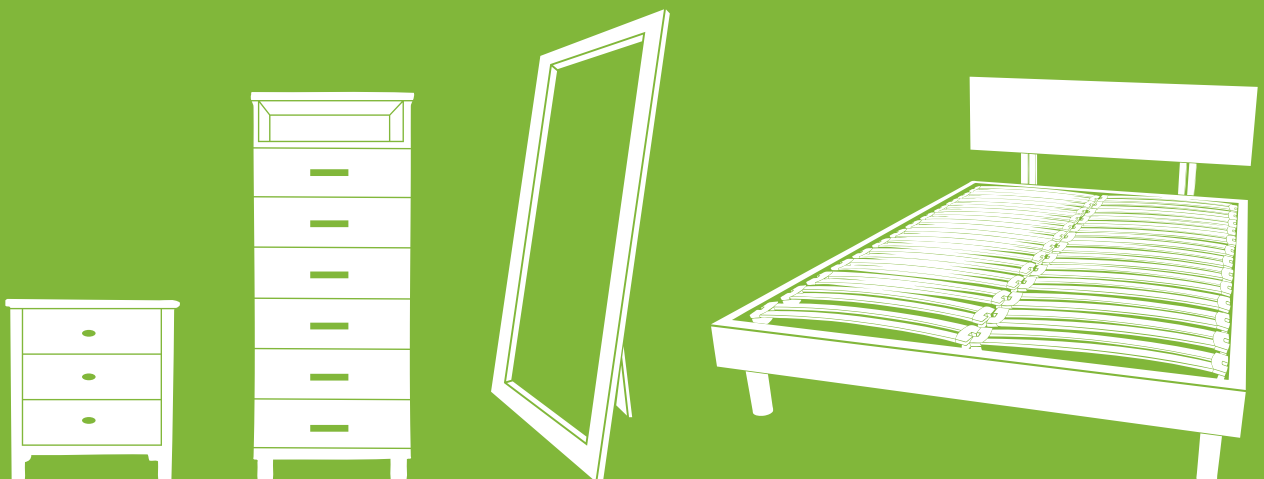
- 42 contemporary range**
 - kids range
 - curved range
 - classic range

bedroom suites

we have a choice of classic and modern suites and design options that can be personalised to suit the style of any home.

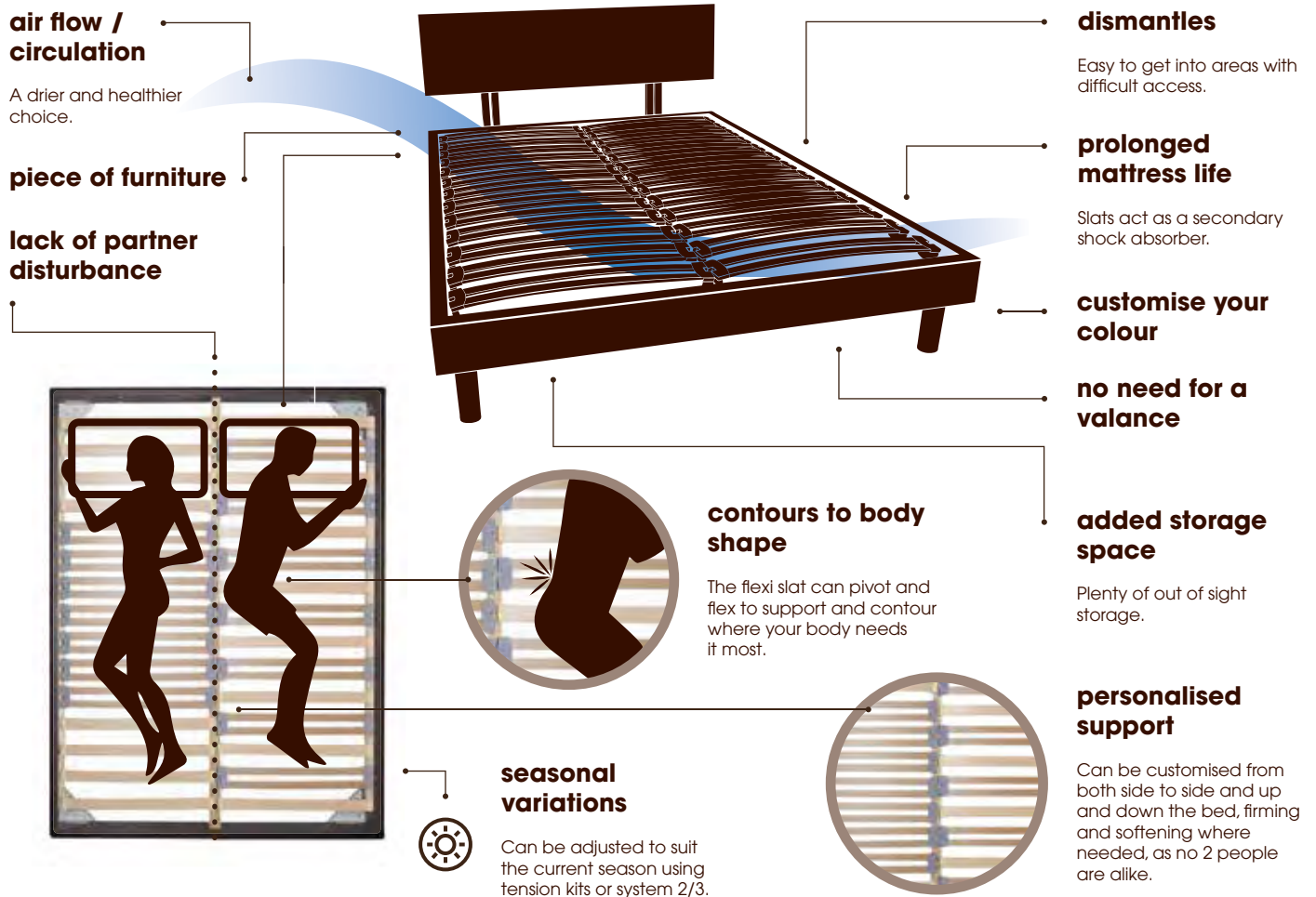
benefits of buying turnwood products:

- ✓ 5 year genuine warranty.
- ✓ Able to make alterations on beds and furniture.
- ✓ Parts and repairs available for many years after warranty expires.
- ✓ Made in Tauranga with nationwide distribution.
- ✓ Rimu, pine, beech, American white oak timbers available.
- ✓ Wide range of colour choice including Resene, Dulux and colour match service.
- ✓ Made by master furniture makers.

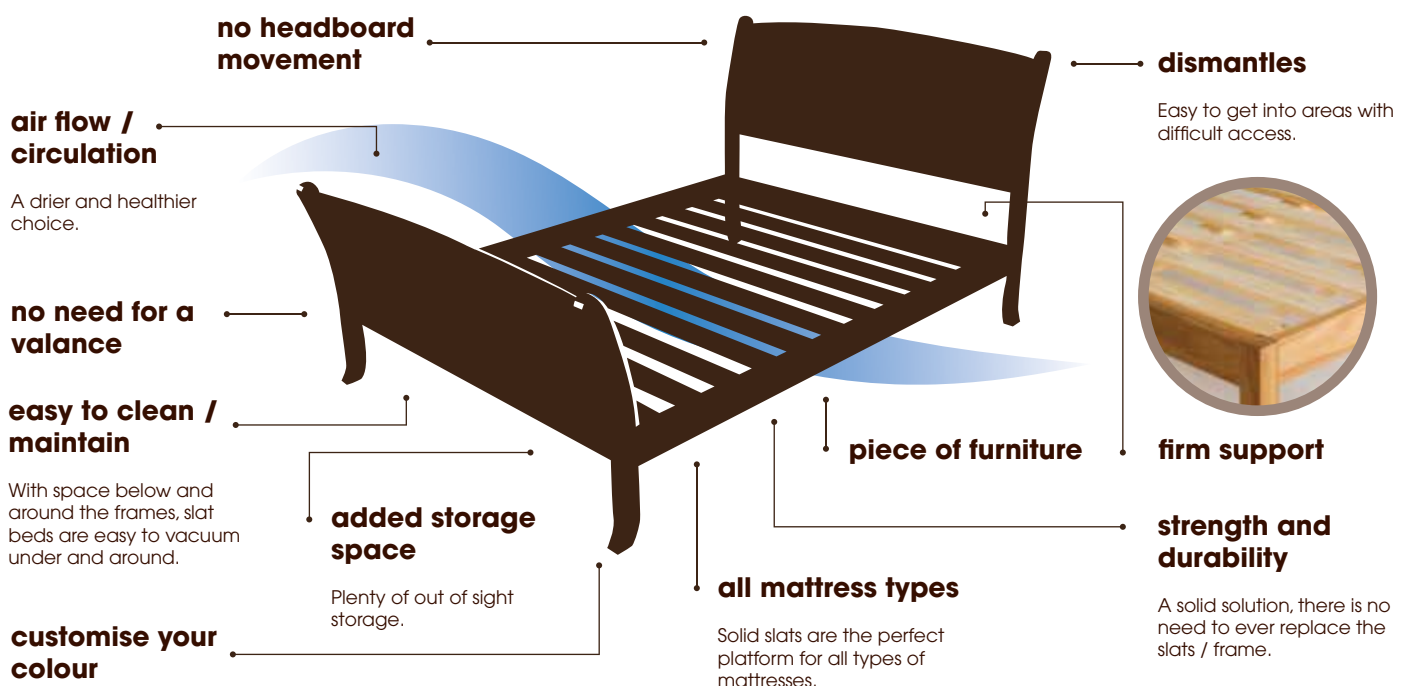


features & benefits

flexi slat features & benefits



solid slat features & benefits



slat options

turnwood slat systems

Our euro flexi bed system is especially designed to suit your body's contours with fully adjustable comfort settings to suit many individual requirements available. Our premium slat holders are made in France from thermoplastic rubber which allows them to pivot and flex together with the laminated birch slats to mirror your natural shape and give you ultimate comfort and support.

Each side can be tuned to your individual body's needs with our three simple slat systems plus further tuned with our tension kits so when your partner moves you don't. The flexible slats are made from sustainable laminated european birch with a beech veneer laminated to the slat surface; the beech veneer is made in Germany and has a unique waffle pattern which also gives extra hold for the mattress. Each slat has been tested with 45kg weight bearing before it is passed.

solid slat system

For strength and durability - a solid solution, this system is made from chemical-free pine.



system 1 - soft

15 x 52mm slats



system 2 - medium

8 x 52mm slats, 14 x 38mm slats
Can be bodyzone or alternating as shown.



Bodyzone

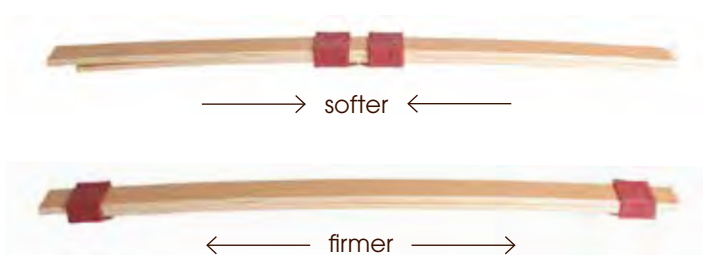
Alternating

system 3 - firm

30 x 38mm slats



tension settings



shoe detail



twin shoe

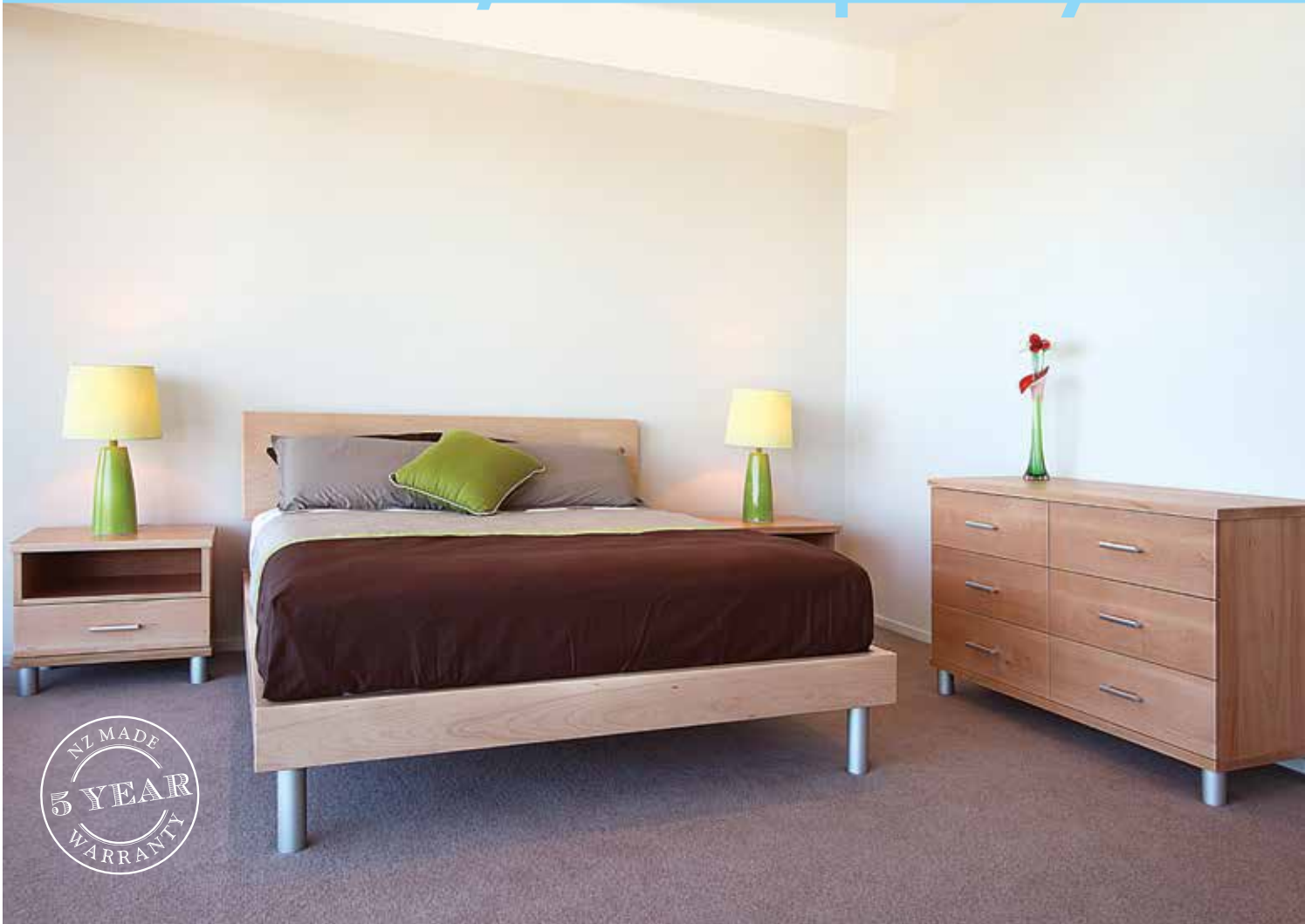
For 38mm slats.



single shoe

For 52mm slats.

clifden suite/contemporary



introducing new zealand's most eco-friendly bedroom suite made from natural beech, available in water based or lacquer finish.



environmentally friendly water based finishings

- ✓ low solvent content
- ✓ free of toxic heavy metals
- ✓ formaldehyde free
- ✓ safe for infants & children
- ✓ low yellowing



made from southland maple beech, its natural character will bring a warm feeling to any room. finished with a protective coating that is kinder to the environment.



slimboy

6 drawer plus shelf.

Height 1430 x width 605 x depth 465.



6 drawer

Height 1265 x width 605 x depth 465.



mirror

Height 1800 x width 820 x depth 35.

Available freestanding or hanging.



lowboy

Height 782 x width 1300 x depth 465.



bedside cabinet

Height 508 x width 607 x depth 460.

dakota/contemporary



**a modern twist to this range with strong lines
and a tasteful finish.**

*will blend into and enhance your
bedroom with the elegant finish.
looks great in both modern and
classic homes.*



dakota gives many options with timber choices creating a bold statement for your bedroom – utilising ball bearings and fully extended metal runners.

bedside cabinets

Choose the 1 or 2 drawer bedside to compliment your bed.



Height 494 x width 587 x depth 453.



Height 494 x width 587 x depth 453.

lowboy



Height 750 x width 1296 x depth 455.

slimboy



Height 1215 x width 590 x depth 455.

mirror

This mirror can be wall mounted or freestanding, its your choice.

Height 1800 x width 820 x depth 30.

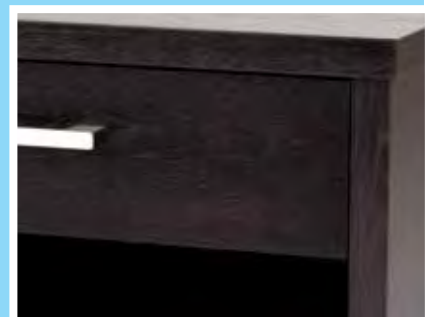


saffron suite/contemporary



with bold lines and a smooth finish, saffron is immaculate.

saffron is a modern suite made for the perfectionist. with a beautifully curved headboard to contrast against its clean lines.



a design that will create a warm and welcoming feel with the beautiful wood grain exposed.

bedside cabinets

Two size options available.



Height 454 x width 632 x depth 438.



Height 454 x width 460 x depth 438.



Height 454 x width 632 x depth 438.

(also as a 3 drawer at 605 high)



Height 454 x width 460 x depth 438.

slimboy



Height 1235 x width 630 x depth 460.

tallboy



Height 1116 x width 900 x depth 460.



mirror

Available freestanding or hanging.

Height 1800 x width 820 x depth 35.

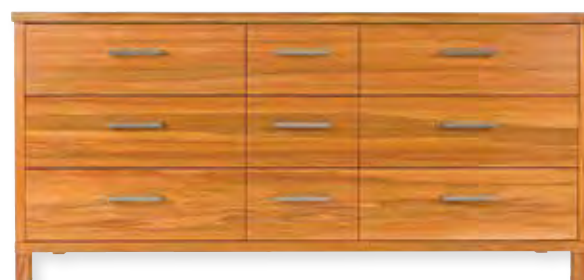
lowboys

Available in a 6 or 9 drawer option.



6 drawer lowboy

Height 772 x width 1325 x depth 460.



9 drawer lowboy

Height 772 x width 1650 x depth 460.



pine saffron suite/contemporary



enhance your modern look with the zen bed matched with the dark and sleek saffron suite in oak or pine with a silky black finish.

this design is spectacular in any of the oak, pine or rimu finishes.



saffron is a fresh and simple design that is ideal for modern living. the uncomplicated style gives you freedom to create your own individual look.

bedside cabinets

1 and 2 drawer bedsidess available in two sizes.



Height 455 x width 620 x depth 438.
(also as a 3 drawer at 605 high)



Height 455 x width 460 x depth 438.

9 drawer lowboy



Height 785 x width 1650 x depth 460.

6 drawer lowboy



Height 785 x width 1325 x depth 460.

mirror

Available either freestanding or hanging.

Height 1800 x width 820 x depth 35.



slimboy



Height 1245 x width 630 x depth 460.



alexandra suite/classic



a timeless look, alexandra will compliment any decor and setting.

this versatile design will bring class and sophistication to your room. with a lovely curve and detailed lines – this suite is pure style.



alexandra is a beautifully crafted piece with a real sense of charm. this soft design is at home in traditional and modern environments.

bedside cabinets

Choose the 1, 2 or 3 drawer bedside to compliment your bed.



Height 645 x width 540 x depth 370.



Height 645 x width 540 x depth 370.



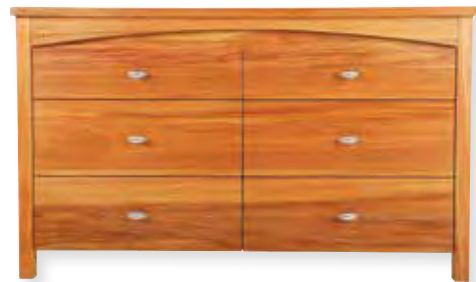
Height 645 x width 540 x depth 370.

chest



Height 1040 x width 1180 x depth 470.

lowboy



Height 745 x width 1240 x depth 470.

Available with the mirror.

slimboy



Height 1250 x width 610 x depth 470.

mirror

This mirror can be free hanging or attached to our lowboy or chest, its your choice.

Height 980 x width 665 x depth 25.



magnolia suite/classic



for a traditional touch the magnolia suite is true elegance.

you can choose a signature piece for your bedroom or the whole suite to complete a look that will last a lifetime.



magnolia is the perfect match for homes with a traditional element. this design was created with detail in mind for more conventional tastes.

bedside cabinets

Available in 1 or 3 drawer.



Height 608 x width 555 x depth 370.



Height 608 x width 555 x depth 370.

slimboy

Height 1336 x width 630 x depth 470.



mirror

Available free hanging or with lowboy.

Height 975 x width 665 x depth 19.



chest



Height 983 x width 1200 x depth 470.

lowboy



Height 803 x width 1293 x depth 470.



savanah suite/classic



savanah will leave a lasting impression in your room.

a real tactile design that enhances the overall look and finish that will work with any style you want to achieve.



with smooth lines and detailed finishings, you will be delighted by the lasting impression it will leave in your bedroom.

slimboy



6 drawer
height 1161 x width 615 x depth 475.

Also available as 7 drawer height 1321.

mirror



Height 1000 x width 700 x depth 40.

Use free hanging or with lowboy.

lowboy



Height 761 x width 1245 x depth 475.

Available as a lowboy only or with mirror.

bedside cabinet



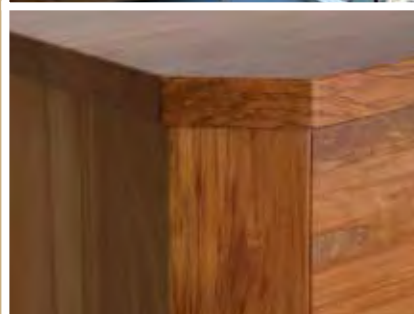
Height 593 x width 543 x depth 375.

thornbury suite/classic



for distinction the thornbury will set your bedroom apart.

this is a unique design with character that is refreshingly different yet so versatile it will blend into any setting.



thornbury has been created using unique angles and clean lines offering a character design that is truly different.

slimboy



6 drawer

Height 1247 x width 626 x depth 470.

mirror



Height 975 x width 665 x depth 20.

Use free hanging or with lowboy.

lowboy



Height 793 x width 1195 x depth 470.

Available as a lowboy only or with mirror.

bedside cabinet



Height 620 x width 555 x depth 370.



celine suite/classic



celine is perfectly refined and can adapt to any environment.

this design can blend into modern or traditional homes and looks superb in rimu or one of our many finishes.



celine is our most popular suite because of its elegance and versatility. the detail of the curved headboard adds to this delightful look.



mirror

Height 980 x width 665
x depth 25.

Available attached
to lowboy or
hanging.

lowboy



Height 755 x width 1235 x depth 470.



slimboys

7 drawer
Height 1335 x width 607
x depth 470.

6 drawer
Height 1155 x width 607
x depth 470.

lamp table

(Available as 1,2,3 draw)



chest



Height 1005 x width 1180 x depth 470.

6 drawer mini lowboy



Height 590 x width 970 x depth 370.



Height 587 x width 400
x depth 370.

bedside
cabinets

Choose a 1, 2 or
3 drawer option.



Height 587 x width 533
x depth 370.



Height 587 x width 533
x depth 370.

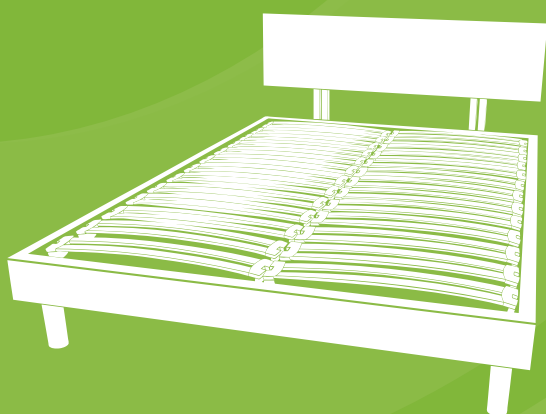


Height 587 x width 533
x depth 370.



headboards & beds

we have created a range of contemporary and traditional design options to give you a choice of headboards, lowtail, hightail or bed bases that go with one of our suites or your mattress and ensemble.



key

available
as:



lowtail bed



hightail bed



base



headboard

bed
sizes:

S = single KS = king single D = double Q = queen K = king SK = super king

leg options
available:



headboards & beds /contemporary



canterbury

With a solid frame this bed creates the perfect balance. Pictured in rimu with a Saffron 2 drawer bedside.

Sizes: D — SK



clifden

This simple and understated style is an adaptable choice. Pictured with the Clifden 1 drawer in natural finish. Available in water based or lacquer finish.

Sizes: D — SK



dakota

A stylish design that shows the grain of the oak to perfection.

Sizes: D — SK



*Standard leg is rectangle.
165w x 55d x 100h*



headboards & beds /contemporary



tasman

A simple, elegant bed that will modernise and create space within your bedroom.

Sizes: D — SK



Standard leg is rectangle.
85w x 85d x 100h



zen

An elegant and subtle design for your bedroom. Pictured in pine with silky black finish and the Saffron 1 drawer bedside cabinet.

Sizes: S — SK

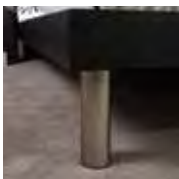


leg detail

Available on any contemporary beds.*



Square satin
chrome leg.
38 x 200mm



Round brushed
nickel leg.
60 x 200mm



Round satin
chrome leg.
60 x 200mm



Round pine,
rimu or oak leg.
90 x 200mm



Square pine,
rimu or oak leg.
85 x 200mm



Square pine,
beech, oak or
rimu leg.
65 x 200mm

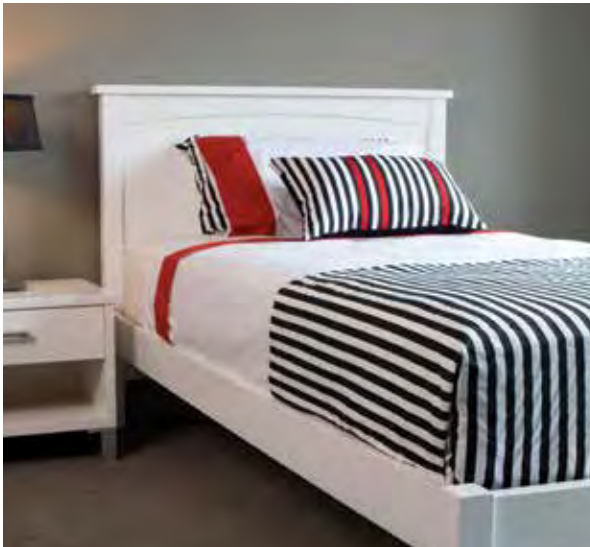
Only available for
dakota & tasman.



Rectangle
pine, oak or
rimu leg.
160 x 55 x 100mm

* all legs are available on all contemporary beds excluding dakota and tasman. please enquire for more information on leg details.

headboards & beds /classic



aberdeen

This solid, versatile bed is ideal for showing off delicate linen. Pictured with the Saffron 1 drawer bedside cabinet in pine with a white lacquer finish.

Sizes: S — SK



avon

A classic design bringing a French provincial style to your room. Pictured in pine with the Celine 2 drawer bedside cabinet in white wash.

Sizes: S — SK



christina

This regal look with slender spindles will bring sophistication to your bedroom. Pictured in rimu with the Alexandra 3 drawer bedside cabinet.

Sizes: S — SK



headboards & beds /classic



devon/magnolia

Adds conventional elegance with an accentuated curve. Pictured in rimu with the Celine 1 drawer bedside cabinet.

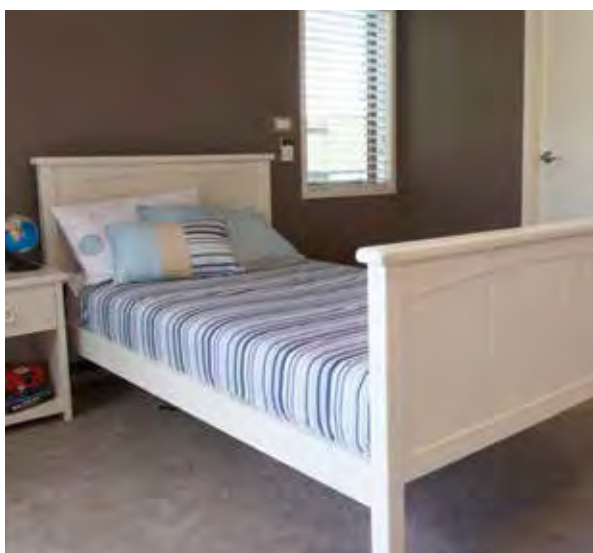
Sizes: S — SK



kensington

The chunky spindles and curved top rail makes this design unique. Pictured in rimu with the Celine 3 drawer bedside cabinet.

Sizes: S — SK



jaime

The Jaime has a tongue and groove look to give a timeless elegance. Pictured with the one draw Jayden bedside cabinet in Resene quarter tea.

Sizes: S — SK





london/alexandra

The spindles offer an alternative to the solid look bringing timeless elegance. Pictured in rimu with the Alexandra 3 drawer bedside cabinet.

Sizes: S — SK



mckenzie base

The mckenzie base is a great alternative to getting a full bed. Pictured in rimu with the Celine 3 drawer bedside cabinet.

Sizes: S — SK



milton

This sophisticated bed brings balance and delicate detail together for an impressive look. Pictured in rimu with the Celine 3 drawer bedside cabinet.

Sizes: S — SK



headboards & beds /classic



salisbury

With clean, simple lines and a natural style this design shows off the natural grain of rimu beautifully. Pictured in rimu with the Celine 1 drawer bedside cabinet.

Sizes: S — SK



savannah

With smooth lines and detailed finishings, you will be delighted by the lasting impression it will leave in your bedroom.

Sizes: Q — SK



thornbury

Thornbury has been created using unique angles and clean lines offering a character design that is truly different. Pictured in rimu with the Thornbury 3 drawer bedside cabinet.

Sizes: Q — SK



headboards & beds /curved



celine

One of our most popular designs, the Celine has a beautiful and subtle curve. With a high tail option to create a sleigh look, this is pictured with the Celine 3 drawer bedside cabinet.

Sizes: S — SK



chateau

An alternative version of the Celine for an accentuated curve and smooth lines. With a high tail option to create a sleigh look, this is pictured with the Alexandra 2 drawer bedside cabinet.

Sizes: S — SK



saffron base

This versatile base can be used standalone or with a headboard of your choice to create a personalised design. Pictured in rimu as a base with the Saffron 2 drawer bedside cabinet.

Sizes: S — SK



saffron

This bed creates a statement bringing timeless quality and a sleek design for a unique look. Pictured in rimu with the Saffron 2 drawer bedside cabinet and slimboy.

Sizes: D — SK



kids range

select from our stylish range of beds, bunks and furniture to create a room that suits your child's personality. brighten it up with our fun range of handles and colours. we also have trundler beds and bunk designs to accommodate a growing child's room or for the occasional adult guest.



sienna suite/kids



the curves will add a new dimension to your bedroom.

sienna with its curves is a new innovation to add a twist to your bedroom.

3 drawer lowboy



Height 795 x width 1100 x depth 508.

bedside cabinet



Height 590 x width 495 x depth 400.

One drawer option also available.



Handle options.



jayden suite/kids



an inspiring fresh design that will
add a modern touch to the bedroom.

the jayden has simplistic, clean lines that will
suit any kids room to perfection.

3 drawer lowboy



Height 795 x width 1100 x depth 455.

beside cabinets



Height 595 x width 495 x depth 387.

3 drawer lowboy & bedside in white lacquer & Resene escape blue. Bedside in Resene quarter tea.



headboards & beds /kids



aberdeen

The Aberdeen has sleek lines to compliment any furniture. Pictured with the Saffron 1 draw bedside cabinet in pine with a white lacquer finish.

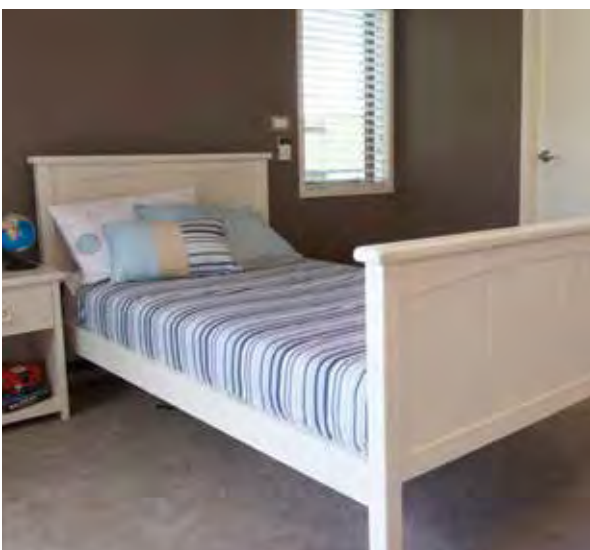
Sizes: S — SK



avon

The Avon is a versatile & refreshing in its design. Pictured in pine with the Celine 2 draw bedside cabinet in white wash.

Sizes: S — SK



jaime

The Jaime has a tongue and groove look to give a timeless elegance. Pictured with the one draw Jayden bedside cabinet in Resene quarter tea.

Sizes: S — SK



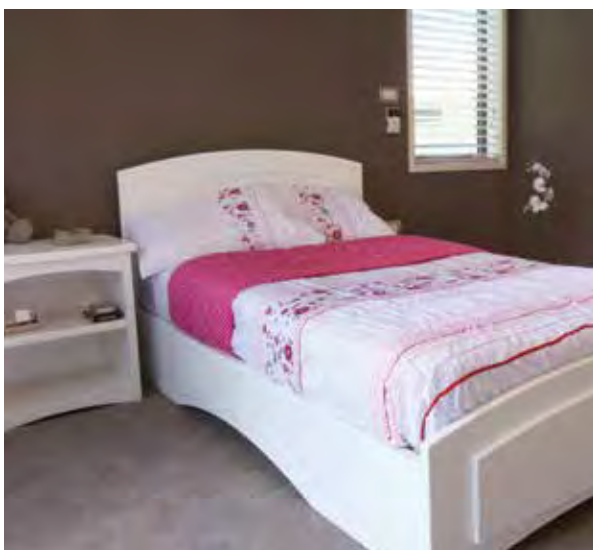
headboards & beds /kids



jayden

The Jayden has modern simple, straight lines to suit any room. The Jayden bed is in white lacquer. The bedside cabinet is a Jayden 1 draw with white lacquer and Resene escape blue.

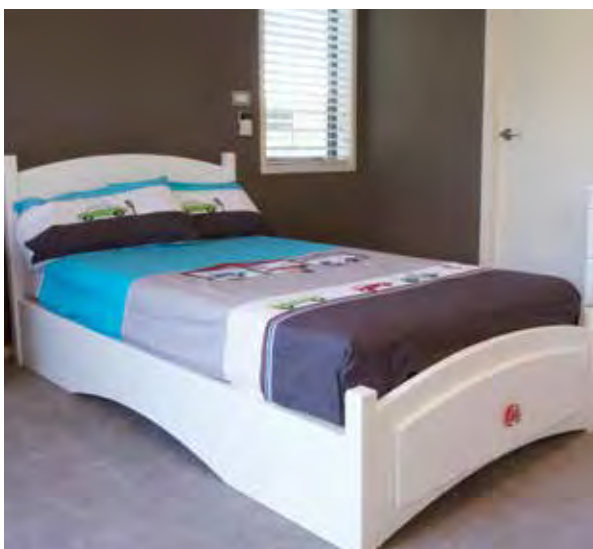
Sizes: S — KS



sienna

The Sienna has simple curves to compliment any kids bedroom and comes with an optional drawer. Pictured with the Sienna bedside cabinet in white lacquer.

Sizes: S — KS



taylor

A modern sleek look with the option of a drawer.

Sizes: S — KS





stratford bunk

This is a solid and sturdy bunk that can be separated into two identical beds as your children grow up. The ladder and safety rails can be used on either side of the bunk.

Sizes: S — KS



trundler

Our Trundler bed is compact but still large enough to comfortably sleep an adult. It can also fit neatly under the bunk set for when friends stay over. Available in the standard colours (at no charge); escape blue, quarter tea and white lacquer. Any Resene or Dulux colours are available upon request for an additional cost. *(Shown with 'London' / Alexandra king single bed).*

Single only.

*Single trundler designed to fit under a king single frame.

**Recommended bed height of 410mm (normally 360) to allow more room for trundler.



finishing touches

it's the little things in life that make us unique. let your furniture represent who you are. from our range of stunning finishes to the handle that caught your eye, make your bedroom special by personalising it with your style. because it's your choice.



handle detail

saffron



dakota



clifden/dakota



thornbury



espresso



celine



savanah



magnolia



alexandra



further handle options:



- dakota
- thornbury



- saffron



- clifden



- alexandra
- celine
- savanah



- wood



colours & finishes

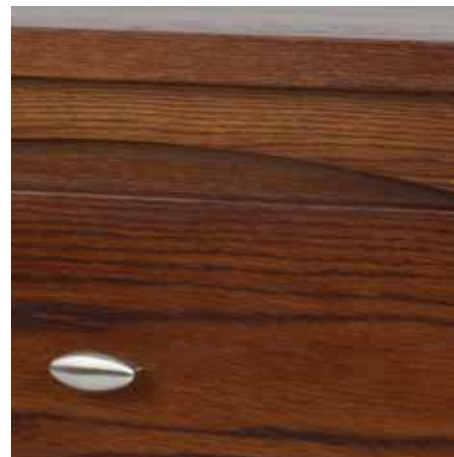
oak finishes

we've chosen the best five finishing colours to represent the true beauty of oak, giving you options and the ability to create your own style of bedroom.



clear

A contemporary european look showing every detail of the beautiful oak range.



amber

Gives oak a traditional feel, looks great on Alexandra and Chateau range.



silky black

Looks great on Dakota and Saffron range, it shows the texture and grain of the oak timber to its best.



dark chocolate

For a darker look, different lighting gives various dark brown shades.



walnut

Creates a stunning atmosphere and adds elegance to your bedroom.

beech finishes (only available in the clifden beech range)



natural

Soft and light to enhance your natural look.



coffee

To add a touch of natural warmth to your room.



fudge

A darker colour for natural sophistication.

pine finishes

Dulux and Resene colours available in pine range.



white wash

Our lightest finish brings French provincial to life.



white lacquer

A clean and fresh finish for a standout.



sand

Light and shows off the beautiful wood grain.



rimu

A rich finish similar to rimu wood.



dark rimu

Extra depth similar to dark rimu wood.



rosewood

Creates a warm and elegant atmosphere.



dark chocolate

This rich stain gives a full body tone and finish.



silky black

Our darkest colour for that contemporary setting.

rimu finishes

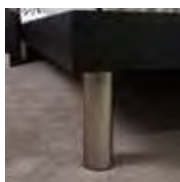
- We use a small amount of tint within the spraying / finishing process which enhances the grains and vibrant colours of the natural product.
- No two trees are the same which is what helps give rimu furniture its uniqueness.
- We recommend purchasing all your pieces together if you are looking for a consistent colour & grain matching.

leg detail

Available on any contemporary beds.*



Square satin chrome leg.
38 x 200mm



Round brushed nickel leg.
60 x 200mm



Round satin chrome leg.
60 x 200mm



Round pine, rimu or oak leg.
90 x 200mm



Square pine, rimu or oak leg.
85 x 200mm



Square pine, beech, oak or rimu leg.
65 x 200mm

Only available for Dakota & Tasman.



Rectangle pine, oak or rimu leg.
160 x 55 x 100mm

* All legs are available on all contemporary beds excluding Dakota and Tasman. Please enquire for more information on leg details.

measurements

All sizes listed are made to fit standard mattresses.
Sizes can be customised further upon request to suit your needs.

contemporary range

height (mm)			width (mm)						length (mm)	
headboard (hb)	hb on base	base / low tail	single	king single	double	queen	king	super king	single / double	king single / queen / king / super king
canterbury									low tail	
890 min	890-1080	340	-	-	1465	1605	1755	1905	1984*	2114***
clifden										
890 min	890-1080	340	-	-	1455	1595	1745	1895	1980*	2110***
dakota										
1020	910	275	-	-	1533	1683	1833	1983	1960*	2090***
tasman										
1020	815	190	-	-	1533	1683	1833	1983	2015*	2145***
zen										
1035	905	315	976	1126	1426	1576	1726	1876	1962*	2092***

*side rail = 1900mm, **side rail = 2000mm, ***side rail = 2030mm

kids range

height (mm)			width (mm)						length (mm)		
headboard (hb)	high tail	low tail	single	king single	double	queen	king	super king	single / double	king single / queen / king / super king	
aberdeen										low tail	high tail
1023	790	370	1033	1183	1483	1633	1783	1933	2010*	2110**	2140***
avon											
1090	790	370	1033	1183	1483	1633	1783	1933	2030*	2130**	2160***
jaime											
1030	797	370	1030	1180	1480	1630	1780	1930	2015*	2115*	2145***
jayden											
800	-	400	975	1125	-	-	-	-	1990#	2090# / 2118###	
sienna											
915	-	435	975	1125	-	-	-	-	1960*	2090***	
taylor											
900	-	418	990	1140	-	-	-	-	2006*	2135***	
stratford bunk											
1620	1620	-	993	1143	-	-	-	-	2030*	2160***	
trundler											
side rail height	slat height										
170	110	-	976	-	-	-	-	-	1962*	-	

*side rail = 1900mm, **side rail = 2000mm, ***side rail = 2030mm

#side rail = 1928mm, ##side rail = 2028mm (recommended for a 2000mm mattress), ###side rail = 2058mm (recommended for a 2030mm mattress)

curved range

height (mm)				width (mm)						length (mm)		
headboard	high tail	low tail	base	single	king single	double	queen	king	super king	single / double	king single / queen / king / super king	king single / queen / king / super king
celine											low tail	high tail
1080	760	363	-	970	1120	1420	1570	1720	1870	2072*	2172**	2287***
chateau											low tail	high tail
1125	820	370		-	-	-	1570	1720	1870	-	2236**	2376***
saffron base											low tail	
-	-	-	385	1005	1155	1455	1605	1755	1905	1978*	2078**	-
saffron											low tail	
1120	-	385	-	-	-	1455	1605	1755	1905	-	2158**	-

*side rail = 1900mm, **side rail = 2000mm, ***side rail = 2030mm

classic range

height (mm)			width (mm)						length (mm)			
headboard	high tail	low tail	single	king single	double	queen	king	super king	single / double	king single / queen / king / super king	king single / queen / king / super king	
aberdeen									low tail		high tail	
1023	790	370	1033	1183	1483	1633	1783	1933	2010*	2110**	2140***	
avon									low tail		high tail	
1090	790	370	1033	1183	1483	1633	1783	1933	2030*	2130**	2160***	
christina									low tail		high tail	
1115	825	370	1013	1163	1463	1613	1763	1913	2010*	2110**	2140***	
devon / magnolia									low tail		high tail	
1050	660	370	1013	1163	1463	1613	1763	1913	2030*	2130**	2160***	
kensington									low tail		high tail	
1135	845	370	-	-	-	1593	1743	1895	-	2110**	2140***	
jaime												
1030	797	370	1030	1180	1480	1630	1780	1930	2015*	2115*	2145***	
london / alexandra									low tail		high tail	
1000	700	370	1033	1183	1483	1633	1783	1933	2010*	2110 **	2140***	
milton									low tail		high tail	
1113	830	370	-	-	-	1653	1803	1953	-	2130**	2160***	
salisbury									low tail		high tail	
1020	790	370	1053	1203	1503	1653	1803	1953	2030*	2130**	2160***	
savanah									low tail		high tail	
1055	730	370	-	-	-	1653	1803	1953	-	2125**	2167***	
thornbury									low tail		high tail	
1050	780	370	-	-	-	1647	1797	1947	-	2135**	2147**	
mckenzie base												
bed base			single	king single	double	queen	king	super king	single	king single	double	queen/king/super king
370			993	1143	1443	1593	1743	1893	2010*	2110**	2010*	2110**

*side rail = 1900mm, **side rail = 2000mm, ***side rail = 2030mm

let turnwood
inspire you to
create your
bedroom.

visit your closest
store to view
our furniture or
contact us today.

turnwood ^{tw}
your bedroom. your style. your choice.

Turnwood NZ Limited
phone **+64 7 578 0049**
fax **+64 7 578 8440**
email **sales@turnwood.co.nz**
www.turnwood.co.nz



retailers stamp